



Surgical Quiz

from *Expressions 2012 issue 3*

[Click here for the Answer and Commentary](#)

Surgical quiz

By **Dr Philip KM Lee** (BDS 1986, MDS[OMFS] 2000),
Specialist in Oral and Maxillofacial Surgery

A 21-year-old woman presented with a 3-cm firm and mobile swelling around her left ear lobe (Fig 1).

She said she could not remember when the swelling originally started, but it had slowly increased in size so she previously had it excised in mainland China, but it returned within a few months. Apart from discomfort from the surgical scar, the patient had no other symptoms from the swelling.

1. What is your diagnosis?
2. What investigations are necessary to confirm the diagnosis?
3. What is the treatment of choice?



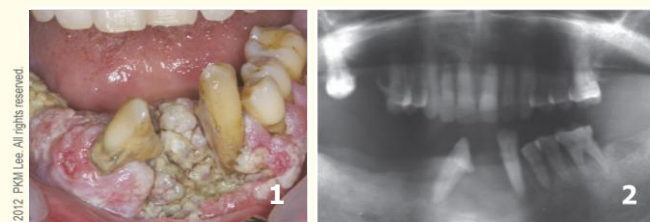
© 2012 PKM Lee. All rights reserved.

Surgical quiz

By **Dr Philip KM Lee** (BDS 1986, MDS[OMFS] 2000),
Specialist in Oral and Maxillofacial Surgery

An 80-year-old Chinese woman with halitosis presented with bleeding gums and multiple mobile teeth (Fig 1). The orthopantogram showed bone loss around the teeth in the mandible (Fig 2).

1. What are the presenting features that differentiate this case from periodontal disease?
2. What are the investigations required?
3. What is your diagnosis?



Surgical quiz

By **Dr Philip KM Lee** (BDS 1986, MDS[OMFS] 2000), *Specialist in Oral and Maxillofacial Surgery*

A 56-year-old Chinese man complained of a swelling that had been slowly growing for several months in his anterior mandible. The swelling was largely asymptomatic except for increasing mobility of the lower incisors.

Clinical examination showed both buccal and lingual expansion of the lower anterior alveolus, from tooth 34 to tooth 45. The swelling was firm and not ulcerated (Fig 1). The orthopantogram showed an osteolytic lesion extending from 35 to 43 (Fig 2).

1. What are the differential diagnoses?
2. How would you reach a definitive diagnosis?
3. What are the surgical options for this patient?

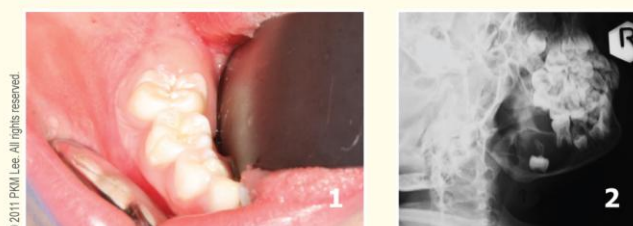


Surgical quiz

By **Dr Philip KM Lee** (BDS 1986, MDS[OMFS] 2000),
Specialist in Oral and Maxillofacial Surgery

An 8-year-old girl had an asymptomatic insidious swelling in the right mandible (Fig 1). A lateral oblique radiograph (Fig 2) showed a well-defined radiolucent lesion in the right mandible and an unerupted second molar.

1. How would you investigate the condition and what information is crucial for treatment planning?
2. What are the differential diagnoses?
3. What treatment options are available?



Surgical quiz

By **Dr Philip KM Lee** (BDS 1986, MDS[OMFS] 2000),
Specialist in Oral and Maxillofacial Surgery

A middle-aged man visited the dental clinic because of red and white lesions on his tongue (Fig 1).

1. What is your diagnosis?
2. What is the aetiology of these lesions?
3. What is your approach in management?



Surgical quiz

By **Dr Philip KM Lee** (BDS 1986, MDS[OMFS] 2000),
Specialist in Oral and Maxillofacial Surgery

An eight-year-old girl presented with a recurrent fluctuant swelling at the right floor of her mouth (Fig. 1). The size of the swelling was changeable but persistent and presented without symptoms except a mild disturbance of tongue movement (Fig. 2).

1. What is your diagnosis?
2. What is the recommended treatment and what precautions are needed during treatment?



Surgical quiz

By **Dr Philip KM Lee** (BDS 1986, MDS[OMFS] 2000),
Specialist in Oral and Maxillofacial Surgery



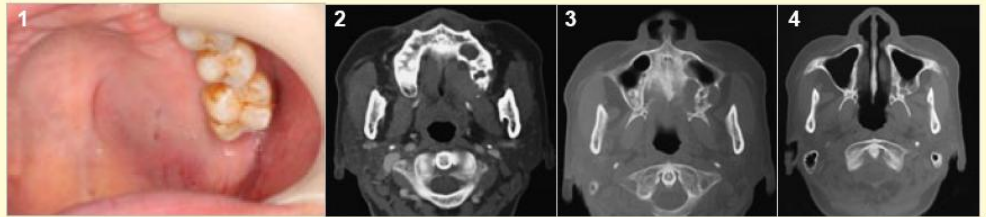
During a routine dental examination of a 36-year-old Chinese woman, the dentist found a strange-looking lesion between the upper incisors in the periapical dental film (Figure). Results of an electric pulp test confirmed teeth 11 and 21 were vital.

1. Describe the lesion and give your diagnosis?
2. What is the appropriate treatment?

Mental floss

By **Dr Philip KM Lee**
(BDS 1986, MDS[OMFS] 2000),
Specialist in Oral and
Maxillofacial Surgery

Check your answer to this issue's quiz, and find more quizzes, on the *Knowledge Exchange/Transfer* webpage of the Faculty's website at [<http://facdent.hku.hk>](http://facdent.hku.hk)



A 60-year-old Chinese woman presented with a persistent asymptomatic swelling in her left palate (Fig 1). The maxillary left second molar was slightly mobile. A general dentist extracted the second molar and drained the swelling, which yielded a yellowish fluid. The swelling persisted without resolution and patient was referred to a specialist in Oral and Maxillofacial Surgery, who requested computed tomography scans (Figs. 2-4).

1. What are the differential diagnoses and how would you confirm your diagnosis?
2. What treatment approach should be recommended to the patient?

Mental floss



Expressions is pleased to feature a regular quiz kindly prepared by Faculty alumnus **Dr Philip KM Lee** (BDS 1986, MDS(OMFS) 2000), Specialist in Oral and Maxillofacial Surgery.

Check your answer on the *Knowledge Transfer* webpage at the Faculty's website at [<http://facdent.hku.hk>](http://facdent.hku.hk).

A 26-year-old Chinese woman complained of a firm mass on the floor of her mouth (pictured below), which caused mild pain and discomfort. She also reported intermittent pain and swelling in the left submandibular area—initially during meal times, but becoming increasingly persistent.

1. What is your diagnosis?
2. What investigations would be appropriate for the patient?
3. What is the treatment of choice and a possible complication?

